



**USCG Sector Southeast Alaska (SEAK)
Mission Management System (MMS)
Work Instruction (WI)**



Category	Regulated Anchorages and Safety Zones				
Title	Southeast Alaska Regulated Anchorage Permissions				
Serial	SEAK-WWM-05 (v01)	Orig. Date	20 FEB 26	Rev. Date	N/A
Disclaimer	<i>This guidance is not a substitute for applicable legal requirements, nor is it itself a rule. It is not intended to, nor does it impose legally binding requirements on any part. It represents the Southeast Alaska Waterway Division’s current thinking on this topic and may assist industry, mariners, and the public, as well as other federal and state regulators, in applying statutory and regulatory requirements. You can use an alternative approach for complying with these requirements if the approach satisfies the requirements of the applicable statutes and regulations. If you want to discuss an alternative approach (you are not required to do so), you may contact the Sector SEAK Prevention Department, who is responsible for implementing this guidance. (See “questions,” below, for contact information.)</i>				
References	(a) Title 33 Code of Federal Regulations (CFR) 110.231 Ketchikan Harbor, Alaska, Large Vessel Anchorage (b) Title 33 CFR 165.1702 Gastineau Channel, Juneau, Alaska—safety zone				
Change Summary	N/A				

- 1) Purpose. This instruction outlines the process for vessel masters to request permission from the Captain of the Port (COTP) to anchor in certain waters in which vessels other than large passenger vessels are prohibited from anchoring without COTP authorization.

- 2) Action.
 - (a) SEAK Waterways Management (WWM) Division and Marine Safety Detachment (MSD) Ketchikan shall reference this guidance when reviewing requests to anchor in regulated areas within Gastineau Channel and Tongass Narrows.

 - (b) The master of a vessel, other than a large passenger vessel, seeking permission to anchor in these areas shall receive express consent from the COTP prior to anchoring.

- 3) Distribution. This instruction may be publicly distributed.

- 4) Background.
 - (a) Ketchikan’s Tongass Narrows and Juneau’s Gastineau Channel experience heavy cruise ship traffic in the summer months. To ensure the safety of both large passenger vessels and transiting smaller craft, special requirements have been set to regulate the designated anchorage ground (Ketchikan) and safety zone (Juneau). These regulations promote safe and predictable travel through congested waterways. Per reference (a)

and (b), vessels other than large passenger vessels are prohibited from anchoring without express consent from the COTP.

(b) Large passenger vessels may anchor in these areas without COTP approval. For Ketchikan, reference (a) specifically defines 'large' as greater than 1600 gross tons. For Juneau, reference (b) defines large passenger vessels as 'cruise vessels' and 'ferries' without explicit measurement parameters; the SEAK COTP considers this to mean US-flag passenger vessels certificated under 46 CFR Subchapter H, as well as foreign passenger vessels with valid Passenger Ship Safety Certificates.

(c) Affected Areas:

- i) *Ketchikan Harbor Anchorage Grounds*. The waters of Ketchikan Harbor, Ketchikan, Alaska, enclosed by the following boundary lines: A line from Thomas Basin Entrance Light "2" to East Channel Lighted Buoy "4A", to Pennock Island Reef Lighted Buoy "PR", to Wreck Buoy "WR6", then following a line bearing 064 degrees true to shore. This anchorage is effective 24 hours per day from 1 May through 30 September, annually.
- ii) *Gastineau Channel Safety Zone*. The waters within the following boundaries are a safety zone: A line beginning at position 58°17.8' N., 134°24.9' W., in the direction of 140° True to Rock Dump Lighted Buoy 2A (LLNR 23685) at position 58°17.1' N., 134°23.8' W.; thence in the direction of 003° true to a point at position 58°17.4' N., 134°23.8' W., on the north shore of Gastineau Channel; thence northwesterly along the north shore of Gastineau Channel to the point of origin.
- iii) Visual depictions of both areas are provided as enclosures.

5) Direction.

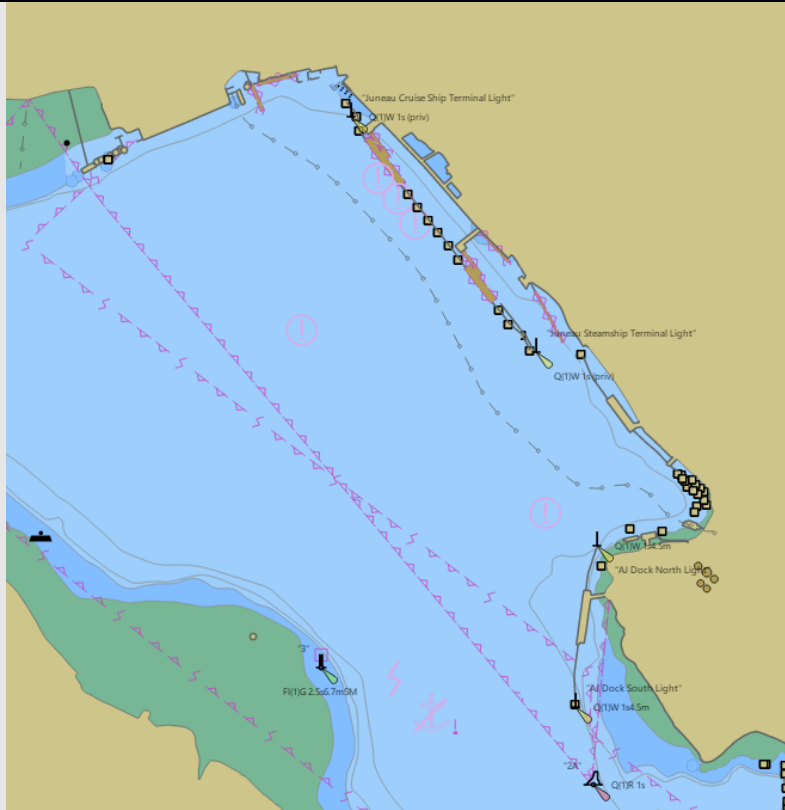
- (a) Masters of vessels other than large passenger vessels seeking permission to anchor in these areas should contact the Sector Command Center and provide the following information, at least 72 hours prior to their intended anchoring time:
 - i) Vessel name and official number;
 - ii) Vessel characteristics including anticipated swing circle;
 - iii) Desired location of anchorage;
 - iv) Dates & times requested;
 - v) Necessity for use of regulated area in lieu of alternate anchorages;
 - vi) Contact information.

- (b) Making a request does not constitute COTP consent. A member of the Sector Southeast Alaska WWM Division or Marine Safety Detachment Ketchikan, as appropriate, will provide notice of the COTP's decision to vessel representative using the contact information provided by the requestor.
 - (c) If approved, operators must adhere closely to the approved period. Any deviation from the original time, date, or location approved requires separate permission. Vessels failing to comply with the approved timeline may be directed to depart or be subject to enforcement action.
 - (d) Vessel masters may elect to route requests to the COTP through a third party, such as an agent.
 - (e) Requests will be considered by the COTP in the order they are received.
 - (f) COTP permission may be withdrawn after approval in the case of changing operational circumstances.
 - (g) Reports of suspected maneuvering and/or anchorage violations should be directed to the Sector Southeast Alaska Command Center on Channel 16 or by calling 206-815-6463.
- 6) Questions. You may direct any questions or concerns related to this instruction to Sector Prevention Department staff at SectorSEAKPrevention@uscg.mil or via the Command Center at 206-815-6563.

S. P. FIELDS
Captain, U.S. Coast Guard
Captain of the Port, Southeast Alaska

Enclosures: (1) Gastineau Channel Safety Zone (Juneau)
(2) Ketchikan Harbor Large Passenger Vessel Anchorage (Tongass Narrows)

Gastineau Channel Safety Zone (Juneau)



Ketchikan Harbor Large Passenger Vessel Anchorage (Tongass Narrows) May - September

